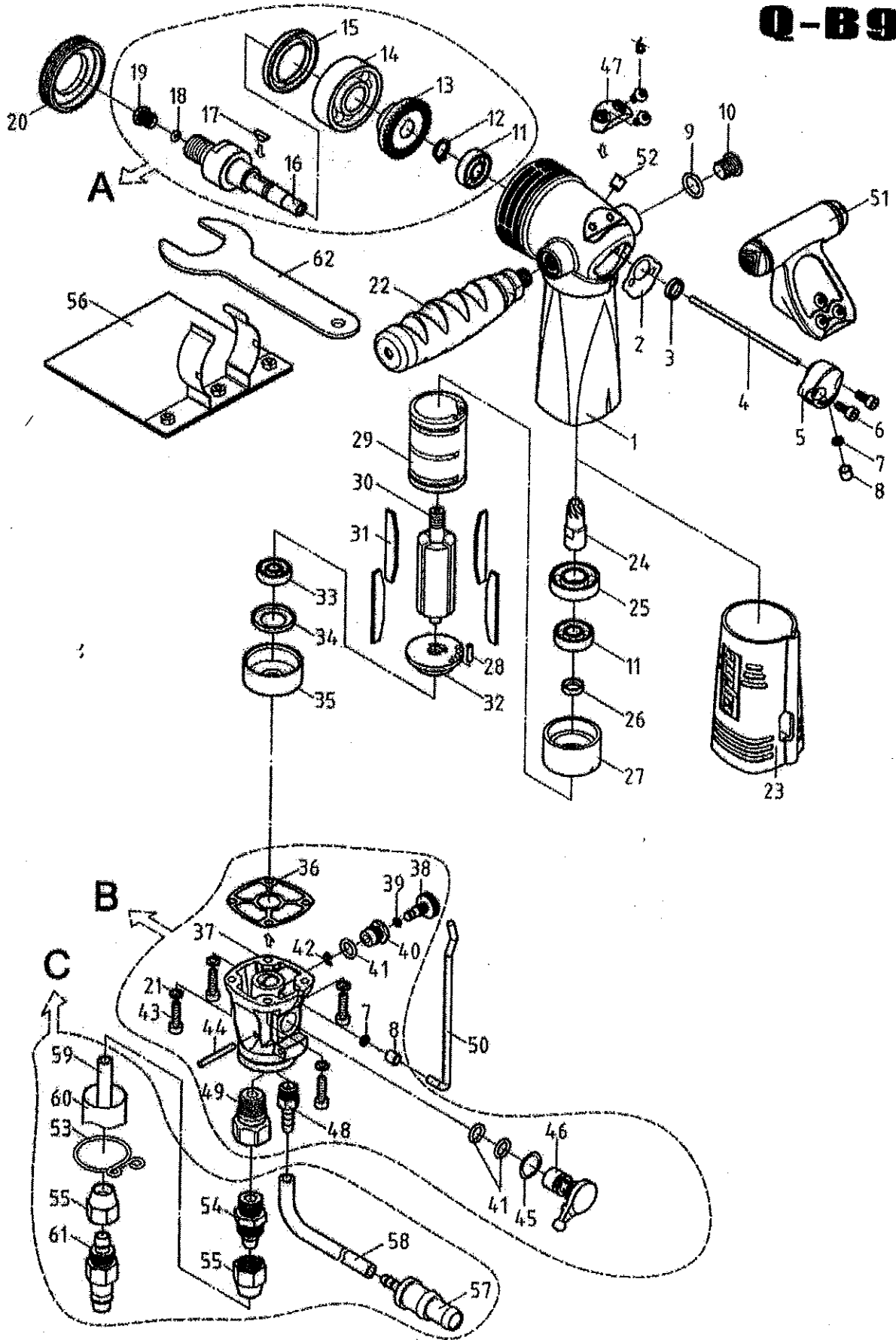


Q-B9



R-B9

Pos	Description	Quantit	Pos.	Description	Quantity
1	Main Body	1	34	Bearing Cover	1
2	Rear Gasker	1	35	End Plate Cover	1
3	Oil Seal	1	36	Rear Gasket	1
4	Water Inlet Tube	1	37	Foundation	1
5	Water Inlet Transfer Post	1	38	Screw	1
6	Hex Screw	4	39	O-Ring	1
7	O-Ring	2	40	Screw	1
8	Bushing	2	41	O-Ring	3
9	O-Ring	1	42	Retainer Ring	1
10	Screw	1	43	Hex Screw	4
11	Bearing	2	44	Pin	1
12	Retainer Ring	1	45	Wave Washer	1
13	Spiral Gear	1	46	Regulator Lever	1
14	Bearing	1	47	Replacement Block	1
15	Oil seal	1	48	Water Inlet	1
16	Spindle	1	49	Air Inlet	1
17	Locking Key	1	50	Water Inlet Tube	1
18	O-Ring	1	51	Handle Set (Top)	1
19	Fountain Head	1	52	Grease Inlet	1
20	Locking Screw Cap	1	53	Snap Ring	1
21	Spring Washer	4	54	Adaptor A	1
22	Handle Set (side)	1	55	Adaptor B	2
23	Rubber Grip	1	56	Shield	1
24	Spiral Gear	1	57	Water Inlet	1
25	Bearing	1	58	Water Pipe	1
26	Rotor Collar	1	59	Air Tube	1
27	Front Plate	1	60	Muffler Tube	1
28	Spring Pin	1	61	Air Inlet	1
29	Cylinder	1	62	Open Spanner	1
30	Rotor	1	A	Spindle Set	1
31	Rotor Blade	4	B	Regulator Set	1
32	End Plate	1	C	Hose Set	1
33	Bearing	1			