



Everything for the Stone Industry

High Quality Air Polishers

Weha QB9 Rear Exhaust Center Water Feed Air Polisher for Polishing Granite, Marble, Quartz, Quartzite, and all engineered and natural stone #130732

Weha QB9 Rear Exhaust Center Water Feed Air Polisher for Polishing Granite, Marble, Quartz, Quartzite, and all engineered and natural stone. The Weha QB9 Rear Exhaust Center Water Feed Granite Air Polisher is a premium quality air polisher designed to work in granite shops 24 hours a day, 7 days a week. The QB9 Granite Air polisher is a Rear Exhaust Air polisher that does not lose power during the granite and stone polishing process. The QB9 Center Water Feed stone polisher comes with 2 hoses. 1 for air. 1 for water. Both feed from the back of the tool. Great for polishing edges and inside bowl holes.

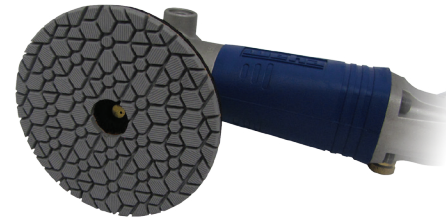
Features:

3.5 lbs
16cfm@90psi
Rear Exhaust
Front and Side Handle

Up to 5000 RPM
Air and water hose
Hose Sleeve
Head Grease Port
Premium Bearing
Center Water Feed

Advantages:

Light for all day use
Does not slow down
Keeps hands warmer and zero chance of oil on the stone
Fabricators can choose their preference of how they want to polish: front, side, or no handle
Perfect polishing speed for wet and dry polishing
Connect and go
Keeps hoses together
Doubles the life
Lasts longer
Guarantees the correct water supply to the polishing pads from the inside out



10, 90, 180 Warranty: 10 day replaces the tool; 90 Warranty repair; 6 month repaired at cost.



Weha Speedy Side Exhaust Center Water Feed Granite Air Polisher #7270012

The Weha Speedy Side Exhaust Center Water Feed Granite Air Polisher is a solid, well built side exhaust air polisher for polishing granite, marble, engineered stone, quartz, and all natural stone and concrete counter tops. The Weha Speedy Side Exhaust Center Water Feed Granite Air Polisher is made with upgraded premium bearings to run 24 hours a day. The great thing about the Weha Speedy Side Exhaust Center Water Feed Air Polisher is that it runs off of 16cm. This means it will not slow down or lose power during the polishing process. At 5,000 rpm, the Weha Speedy granite Air Polisher is one of the fastest polishers on the market. The nice advantage of having the Weha Speedy Side Exhaust Center Water Feed Air Polisher, is the air comes out the side. So the fabricator can blow air on the stone and dry it off to see the polish before moving on to the next polishing pad With its small, compact design, the Weha Speedy Side Exhaust Center Water Feed Air Polisher is one of the best granite air polishers for polishing edges and inside bowl holes.

Features:

3.5 lbs
16cfm@90psi
Up to 5000 RPM
Air and water hose

Advantages:

Light for all day use
Does not slow down
Perfect polishing speed for wet & dry polishing
Connect and go

10, 90, 180 Warranty: 10 day replaces the tool; 90 Warranty repair; 6 month repaired at cost.

If you are looking for parts for your Weha Air polisher please check out our website. We carry a complete line of replacement parts. If you don't see what you need on our website you can send an email to josh@wehause.com with the model number, part number, and photo of part and he will check our inventory and contact you. You will find the schematics for our different air polishers at the following link: <https://www.wehause.com/Air-Polisher-Parts-s/1870.htm>

To learn more contact:

Weha USA

info@wehause.com

1-877-315-4761



Everything for the Stone Industry